

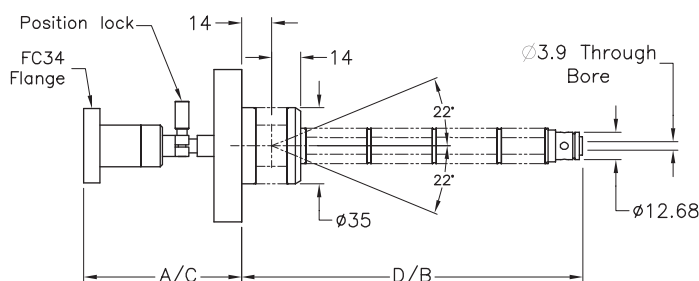
Hollow Wobble Sticks (WH)

The WH hollow Wobble stick utilises a flexible edge welded bellows to enable effective manually operated movements to be transmitted through the wall of a vacuum vessel. A hollow wobble stick manipulator enabling small tools or vacuum instruments to be inserted directly into the vacuum envelope. Tactile operation to give the user a true 'feeling' of position inside the vacuum chamber.



Product Overview

- Linear travels from 80 mm to 280 mm
- +/- 22° of angular movement
- Dual edge welded bellows.
- 70 mm OD conflat mounting flange.
- Leak rate <math> < 1 \times 10^{-10}</math> mbar ls⁻¹
- Pressure range 1 bar to 10⁻¹¹ mbar
- All stainless steel construction
- 34 mm OD travelling flange with clear bore of 3.9 mm suitable for rotary drive units



Hollow Wobble Stick (WH)	
Pressure Range	UHV to 1 bar
Leak Rate	1x10 ⁻¹ mbar.l.s ⁻¹
Service Intervals	100,000 cycles
Bakeout Temperature	250 °C
Construction	Mechanism: stainless steel, aluminum and bronze
Seals	Stainless steel bellows
Mounting Position	Any
Linear Lock/Clamp	Yes

Hollow Wobble Sticks (WH)												
DN Type	Flange OD		Tool Mounting Flange	Linear Travel	Angular Range Degrees	Retracted A	Extended B	Extended C	Retracted D	Hole Dia	Weight	Order Code
	mm	Inch				mm	mm	mm	mm			
DN40	70	2.75	34	80	±22.0	139	159	74	79	3.6	1.0	ZWS75H
DN40	70	2.75	34	151	±22.0	210	259	74	108	3.6	1.0	ZWS150H
DN40	70	2.75	34	237	±22.0	296	381	74	144	3.6	1.0	ZWS225H
DN40	70	2.75	34	280	±22.0	339	442	74	162	3.6	1.0	ZWS275H

All dimensions in mm unless otherwise stated.